



EUROPA NEWS



BULLETIN OF THE EUROPA STUDY UNIT

<http://www.europastudyunit.org/>



MARCH-
APRIL
2012
#408

Europa 2012: Visit



visit MALTA



This year's EUROPA series is well underway. Expect to see many more in the next issue.

GREAT BRITAIN 1v
Issue Date 10 April 2012

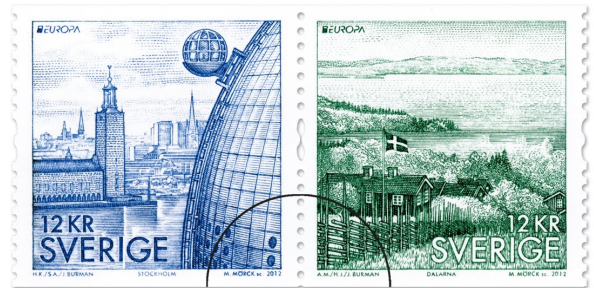


This is the only stamp out of a set of 14 that bears the Europa logo.

SPAIN 1v
Issue Date 4 April 2012



SWEDEN 2v se-tenant
Issue Date 12 January 2012



DENMARK 1v
Self-adhesive
Issue Date
21 March 2012



FAROE ISLANDS 2v
Issue Date 30 April 2012



GREENLAND 2v
Issue Date 7 May 2012
Issued in panes of 50, mini-sheets of 8+label, and booklets of 12 self-adhesive.



WHAT'S IN THIS ISSUE

ARTICLES

Comments from your membership renewals.....	5
The Luster Monographs - 1956	7-10
European Bison and Poland's 2011 Europa Stamp.....	14
Results of Reader Poll.....	16

DEPARTMENTS

New Issues: Europa 2012.....	1-2
New Issues: General.....	3-4, 15
New Issues: with Scott #s.....	13
The Miscellaneous Box.....	6
Editor's Page(s).....	11-12

FEATURES

Member Auction #122	Insert 1-6
Handbook Update (Part 2)	Insert 7-8

Don Smith has once again prepared an awesome auction! Also included is additional information to supplement the EUROPA 2010 Handbook listing.

Europa 2012: Visit



Query to members: as the designs roll out, which do you think are most effective in enticing you to visit the country?

SLOVENIA 2v

Issue Date 30 March 2012



The stamps also publicize that Maribor was selected as a [European Capital of Culture](#) for 2012. The city of Guimarães (Portugal) was also selected for 2012.

BOSNIA-HERZEGOVINA (Croat Post) 2v

Issue Date 5 April 2012

**SPANISH ANDORRA 1v**

Issue Date 4 April 2012

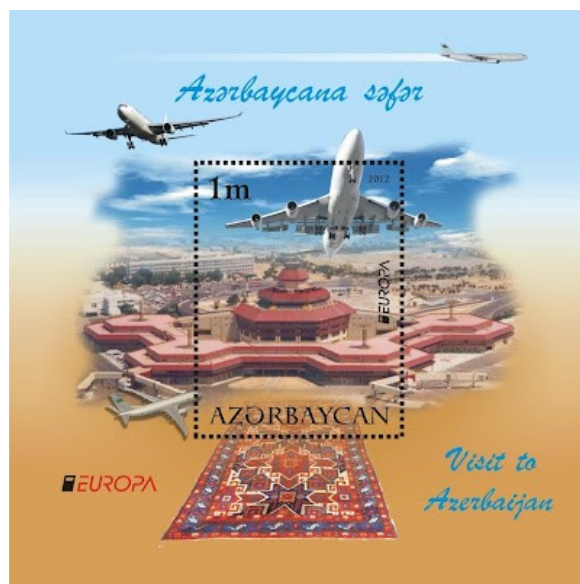
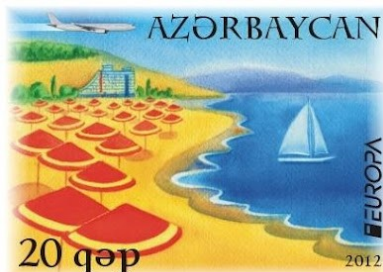
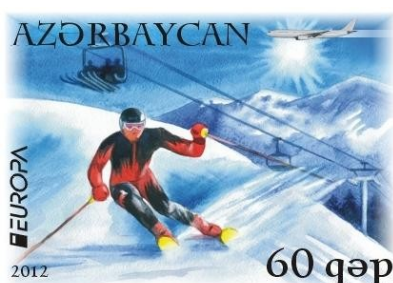
**LIECHTENSTEIN 1v**

Issue Date 5 March 2012

**AZERBAIJAN 2v+ss**

Issue Date March 2012

Issued in mini-sheets of 10 stamps, plus booklets of 8 stamps in the form of 4 pairs printed tête-bêche.

**NAGORNO-KARABAKH (Republic of Mountainous Karabakh) 2v**

Issue Date January 2012

Printed in 2 mini-sheets of 9 with label; also in one mini-sheet of 8 (4 of each stamp) plus 2 labels

NOTE: while these stamps are included in most stamp catalogs and Europa albums, they are not recognized by either PostEurop or the UPU.



[Junior Eurovision](#) 2010 Contest
Winner Vladimir Arzumanyan



[World Youth Chess Champion](#)
2011 Samvel Ter Sahakyan

New Issues - Norden 2012 "Life at the Coast"

Alert reader Benny Svensson alerted me that I had copied the information from the previous issue into this space. So, for our web readers, my apologies and some newer information, which will appear in the NEXT issue of EN.

Souvenir folder for all 8 Norden sheets issued in 2012 —>



SWEDEN



DENMARK, GREENLAND, NORWAY

Details as they come available

Issue date 21 March 2012 for all countries

New Issue — Protection of the Black Sea

BULGARIA

Issue date 31 October 2011

Souvenir sheet of 2 publicizing **International Black Sea Action Day**

Scott catalog number 4583.

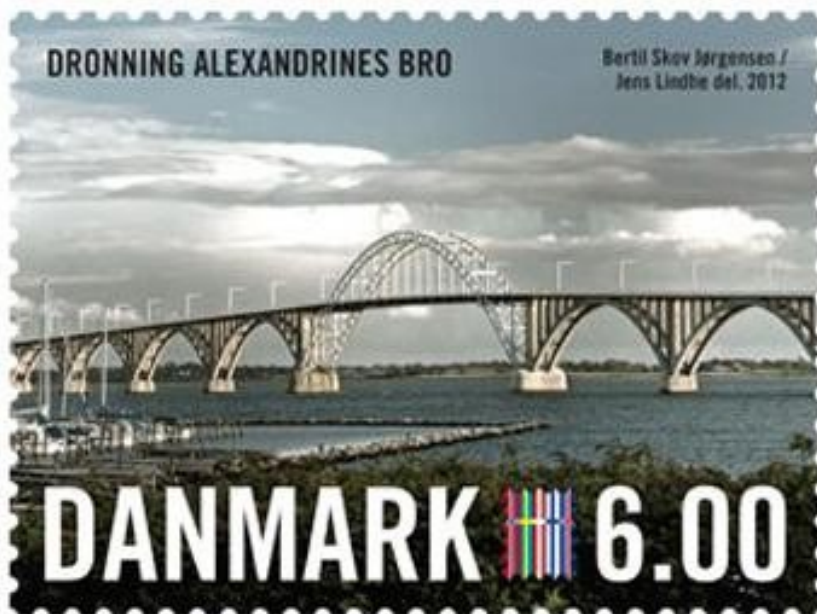
Also postal stationery

The **Convention on the Protection of the Black Sea Against Pollution** (the "Bucharest Convention") was signed in Bucharest in April 1992, and ratified by all six legislative assemblies of the Black Sea countries in the beginning of 1994. Its purpose is to "prevent, reduce and control the pollution in the Black Sea in order to protect and preserve the marine environment". Signatories are Bulgaria, Georgia, Romania, Russia, Turkey and the Ukraine.; i.e., all the countries bordering the Black Sea. On 31 October 1996 the Black Sea countries signed the Black Sea Strategic Action Plan (SAP) for the Rehabilitation and Protection of the Black Sea. Black Sea Action Day is held annually in a different host country to promote the SAP.



New Issues — Nordia 2012

DENMARK Issue date 4 January 2012 2v + souvenir sheet incorporating the two values
Publicizing **NORDIA 2012**, to be held in Roskilde, Denmark 2-4 November 2012



Exhibitors include the 5 Nordic Philatelic Federations and the US Scandinavian Collectors Club.

6.00 DKK - The Queen Alexandrine bridge (Danish, Dronning Alexandrines Bro) is a road arch bridge that crosses Ulv Sund between the islands of Zealand and Møn in Denmark. It was the main road connection between the islands until the Farø Bridges were opened in 1985, which now provide a road link to the western end of Møn. The Bridge is 745 metres long and 10.7 metres wide. The central arch span is 127 metres, and the maximum clearance to the sea is 26 metres. Construction commenced 1939 and the bridge was opened on 30 May 1943. It is of steel arched construction, having 10 piers in the sea from which the arches spring. The bridge is named after Queen Alexandrine, consort of King Christian X of Denmark.



8.00 DKK - The Farø Bridges (Danish, Farøbroerne) are two road bridges that connect the islands of Falster and Zealand in Denmark by way of the small island of Farø which is approximately mid-way across the Storstrømmen Sound. A smaller bridge from Farø provides access to Bogø and thence to the island of Møn. The Farø Bridges were opened by Queen Margrethe II on 4 June 1985. They were built because of the increasing congestion problems on the old Storstrøm Bridge from 1937.



The souvenir sheet is being sold for an additional DKK 8.00 to help defray the costs of the show.

The website for NORDIA 2012 is
<http://nordia2012.dk/>.

NORDIA
2012



Comments from your membership renewals

Don Smith sent along a listing of the comments that you all kindly included with your renewals. Herewith is a distillation of what you told us this year.

Your observations on the individual sets, theme and the year as a whole

A very mixed bag this year. For those who said “good theme” or “excellent overall” there were about as many who were underwhelmed. Herewith is a sampling of your thoughts:

- Not overly impressed with some of the designs. Seems like “Year of the Tree” or “Year of Wood.”
- Very interesting & ecologically pertinent!
- Designs were a bit “boring.” Was hoping for more colorful and exciting work from the posts; expected more [considering] how much they charge for Europa stamps.
- There was more variety than I had anticipated. I like Austria’s seed packet – we’ll see if they grow.
- There will always be countries that “miss the mark” when a stamp design is contemplated. Sometimes, it could be that culture and background influences the theme of a stamp. Sometimes the theme doesn’t get through due to space limitations and, perhaps, haste in design and printing.
- PostEurop is following the UN. I think they should have used the European Year of Volunteering.

Re. that last comment, I recall that PostEurop made a conscious decision to change the planned theme and use the UN theme for the year. Most likely the intent was to kill the proverbial pair of birds with a single stone, as they acknowledge that many postal administrations would be issuing stamps for the UN initiative. With a proliferation of worthy causes, I expect we may be seeing more of this in the future.

So, is PostEurop trying to be more respectful of collectors’ budgets? If so, many postal administrations aren’t cooperating, as your comments continue to point out. One member’s comment said it all:

The number and variety of formats (singles, sheetlets, coils, self adhesive, SS, mini-sheets, etc.) being issued is totally out of control. Additionally, the fact that countries are not releasing their Europa issues individually but including them in a set/series that includes non-Europa issues makes it harder to continue collecting this topic, or to get started.

I for one couldn’t agree more. There’s not much that we collectors can do except stop buying such stuff and hope the countries get the message. Lighthouse, for one, decided years ago not to leave space for such things; they had it right.

How are we running the Unit?

What can we say? Comments ranged from “Excellent” to “absolutely fantastic.”

- [The ESU] is competently run by officers dedicated to their subject, as you can tell by their fine contributions in the *Europa News*. [They] are doing a great job in making the unit what it is. Thank you for a job well done.
- Outstanding given the resources available and small number of people involved.

It is absolutely a labor of love, and we appreciate your encouraging comments and support. Keep those cards and letters—and emails and tweets—coming. Thanks to Al Gore’s wonderful invention, we are getting more electronic contributions from our members, including short articles (see for example, Glenn Roehrig’s excellent piece elsewhere in this issue).

How can we make the Unit or the Europa News better?

Most of the comments were variations on “keep doing what you’re doing”:

- the *Europa News* gets better with each issue. I like the easy to read print and the professional format of presenting interesting articles in an attractive way.
- It’s taken on a professional appearance.
- Love the color (a lot of these).

Copy that. Color is here to stay.

Some very helpful suggestions also, such as:

- More on older stamps and cancels as well as new issues if possible
- How about something about the Unit – number of members, where from, how did the Unit begin, and first issue of newsletter

The Luster monographs are one step toward providing more on the older issues. We will also focus on other issues too—not just the annual issues. As for Unit history—I now have all of the ENs from Number 1 onward (some are carbons) so there is plenty of material. Not to mention what Don has in his head. We’ll give it a go.

How can we improve the website?

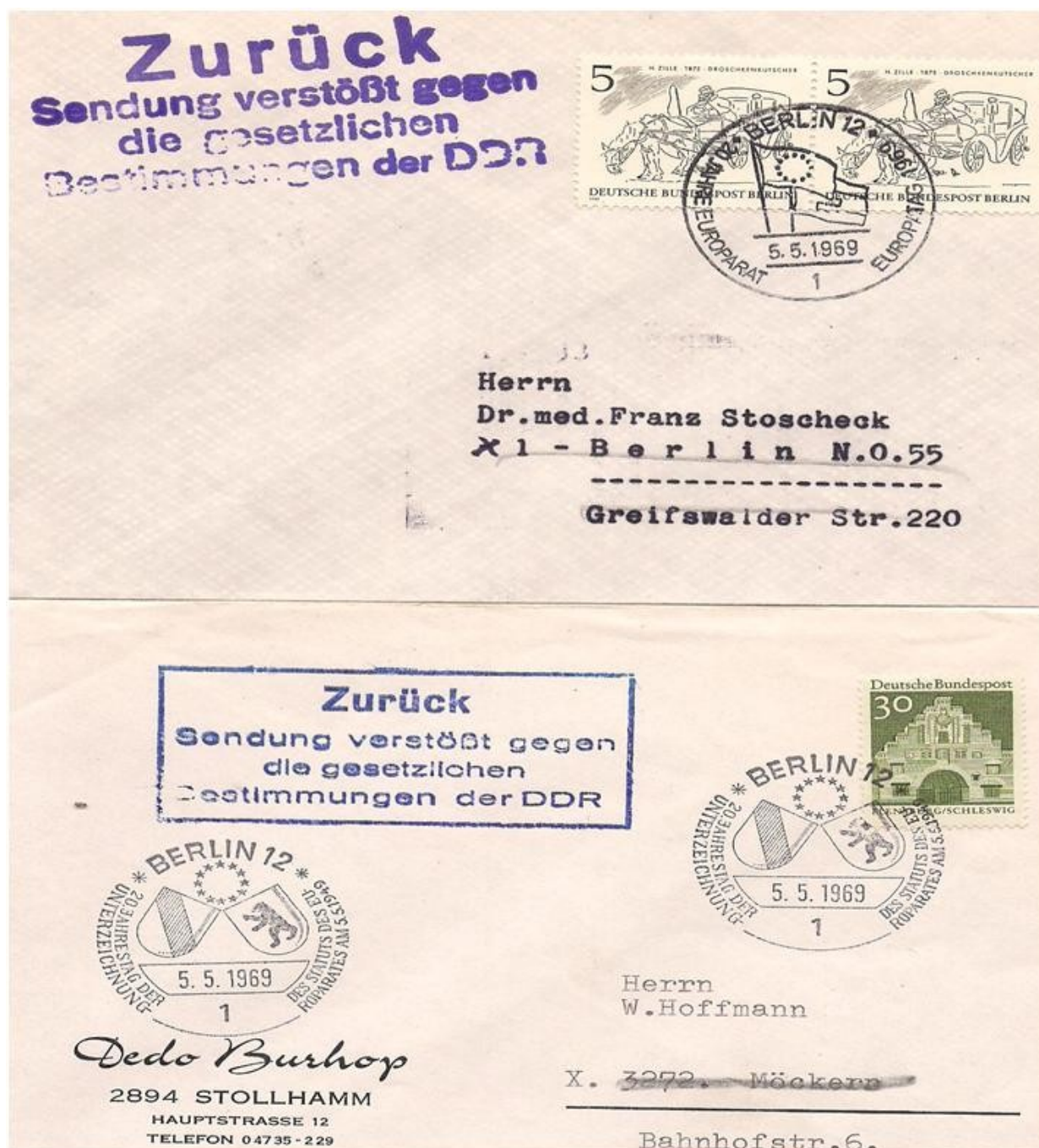
Not much activity yet, as many of our members are not all that computer literate. My hope is that this is the avenue by which we’ll attract the younger members that we need to recruit. There’s a lot out there—please give it a look. We really need more help in this area (our current webmaster has gone AWOL) so if anyone would like to volunteer....? ■

The Miscellaneous Box — Tonny Van Loij

Two interesting “Zurück” covers with philatelic cancellations commemorating 20th anniversary of the European Council. The cancels are from BERLIN 12 in the former West Berlin.

The first cancel is listed in D’Urso as #A26, the second as #A24, each with a rarity factor of 2.

The reason for “Zurück” (“return to sender”) is probably because the cancels—publicizing a major milestone in European Unity—were seen as Western propaganda. The first cover was addressed to East Berlin. The second cover has a nice bit of irony. The destination is the town of Möckern, which was taken by the Red Army on the same date - 5 May.



The translation for the marking is “Return. Mailing interrupted according to the enacted laws of the DDR”.

The 1956 EUROPA Stamps — a Monograph by Steve Luster (Part 3)

The Luster monograph installment continues with a discussion of the Belgium issue for 1956 (France was covered in the previous ENs; other countries will be taken up in the next issue).

Note that there are gaps in the figure numbers. This is because this article is excerpted from an even more exhaustive monograph.

The complete monograph will be posted on the ESU website in the near future, where it can also be downloaded and printed. Stay tuned!

BELGIUM



Figure 39. Complete set of Belgium's 1956 Europa stamps. ⁴

Like all of the other ECSC countries except Luxembourg, Belgium issued a set of two Europa stamps in 1956. Here are the technical details of those stamps. They were designed by Daniel Gonzague and engraved by L. Janssens. The stamps are recess-printed on un-watermarked paper, perforated $11\frac{1}{2} \times 11\frac{1}{2}$, by the Atelier du Timbre, Malines, (e.g., the official Belgian State Printing works). The stamps were printed 30 to a sheet. 21,403,000 stamps of the 2F value and 5,258,000 stamps of the 4F value were printed. Figure 39 shows the complete set. The 2F stamp was printed predominantly in green and the 4F stamp was printed predominantly in purple. The D'Urso Catalogue assigned the numbers "1/2" to these stamps. The stamps are printed as a deluxe proof, in black, but I do not have a copy of that proof to illustrate in this monograph.

The perforated stamps were printed from 4 plates. An example of each plate number is shown at figure 40. There are two types of plate number "1." Each is shown at the right of the figure.

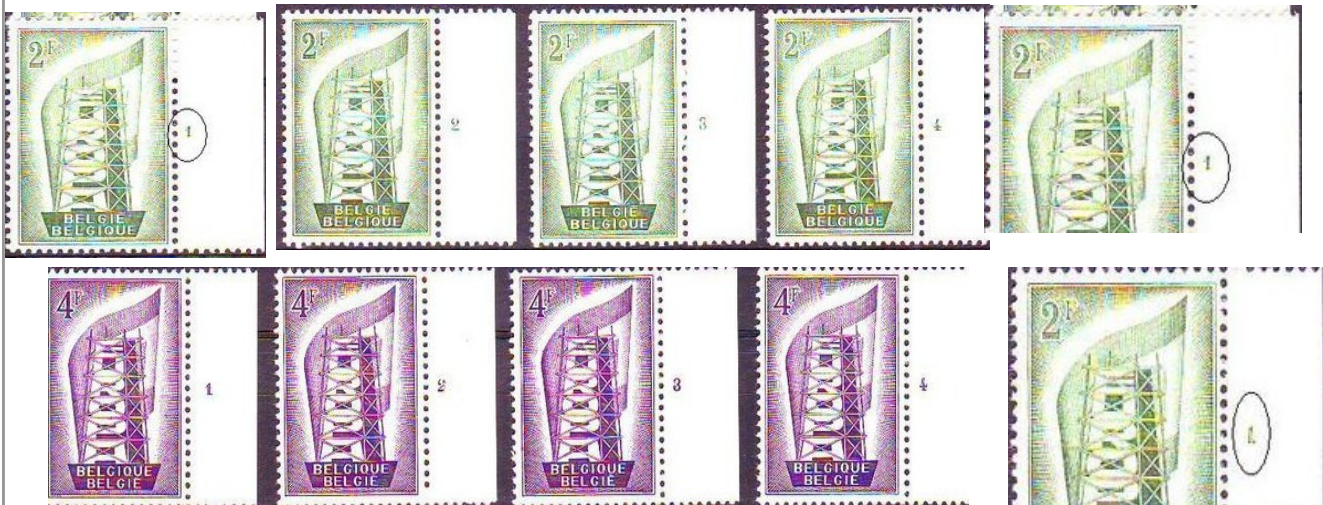


Figure 40. Set of Belgium's 1956 Europa stamps in right margin plate number singles with the "1" variety on the 2f also shown.

For every modern stamp it issues, Belgium provides the philatelic world with some of the most seldom seen specialized material. Let's look at that material now.

The 1956 EUROPA Stamps — a Monograph by Steve Luster (cont'd)

Imperforate - For most 20th Century issues and almost all stamps from 1930 onward, imperforate stamps have been prepared in the original colors and distributed only to high government officials. From 1929-1970 only 200-400 of each were printed. From 1971 to date, 1,000 of each have been printed. However, only 240 parcel post imperforate stamps were ever printed. Stamps up to 1950 are sold gummed or un-gummed, as issued, sometimes with a script "Specimen" overprint. After 1950, all Belgium imperforate stamps were issued un-gummed with an individual number printed on the reverse of each stamp. Since Belgium imperforate stamps are presented only to high government officials, most of whom retain the stamps for their own collections, there is no direct distribution to the philatelic market. Sometimes it takes years before these stamps to find their way onto the market, making them scarce and seldom offered. These issues are without gum and have a printed control number on the reverse. Belgium imperforate stamps are printed from the original stamp printing plates in the issued colors.

Don Smith and Dan Shilcrat sent me copies of several of the items appearing on this page. First at figure 42, is a set of right margin Belgium imperforate stamps. Note that they have been printed from plate #3. Don writes that the number "136" is printed in black, on the back of each stamp.

Another set of Belgium imperforated stamps, in left margin copies, is at figure 43. Note that there is no plate number in the margins as these stamps come from the left side of a sheet. According to Don Smith, all of the right margin imperforate stamps he has seen thus far have come from plate #3.

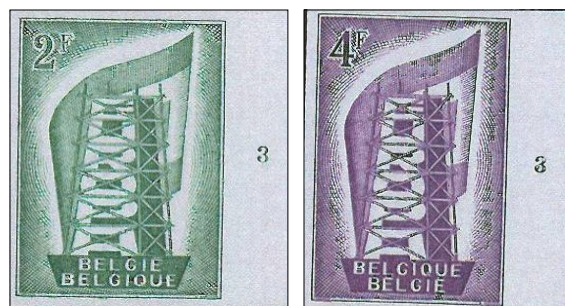


Figure 42. Complete set of imperforate Belgian 1956 Europa stamps. The number "136" in black, is imprinted on the back of each stamp.¹⁰

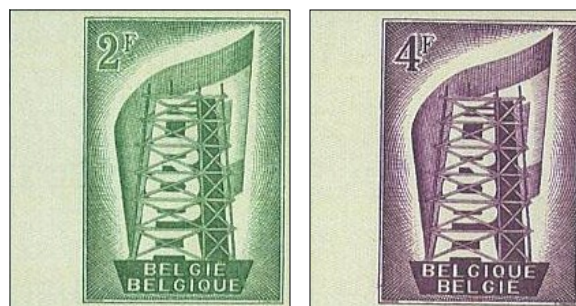


Figure 43. Complete set of imperforate Belgian 1956 Europa stamps. These are left margin copies and do not show a plate number.⁶

The set of Belgium imperforate stamps at figure 44 comes from Dan Shilcrat. Note that he sent photocopies of the large, printed numerals that are on the back of each stamp.

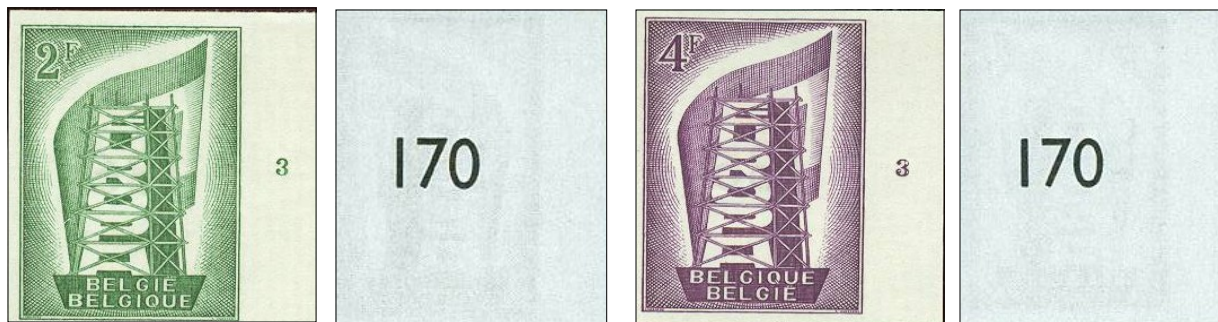


Figure 44. Set of Belgium's imperforate 1956 Europa stamps showing the large numerals "170" on their reverse sides.¹¹

The 1956 EUROPA Stamps — a Monograph by Steve Luster (cont'd)

D'Urso indicates that official first day covers exist for the issue. The FDCs can be found with two types of circular cancels. One contains the words "Bruxelles-Brussel," and the other contains the words "Bruxelles-Brussel, Salon Philat.(elic) Salon." This second cancel is listed in the D'Urso Catalogue as number T-17 with a rarity factor of 5.

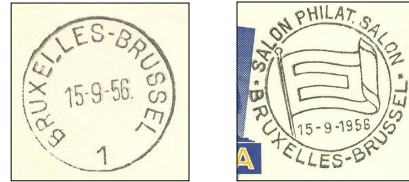


Figure 47. Both Belgium first day cancels. ⁴

Figure 48 shows an example of the Bruxelles - Brussel cancel on a first day cover.

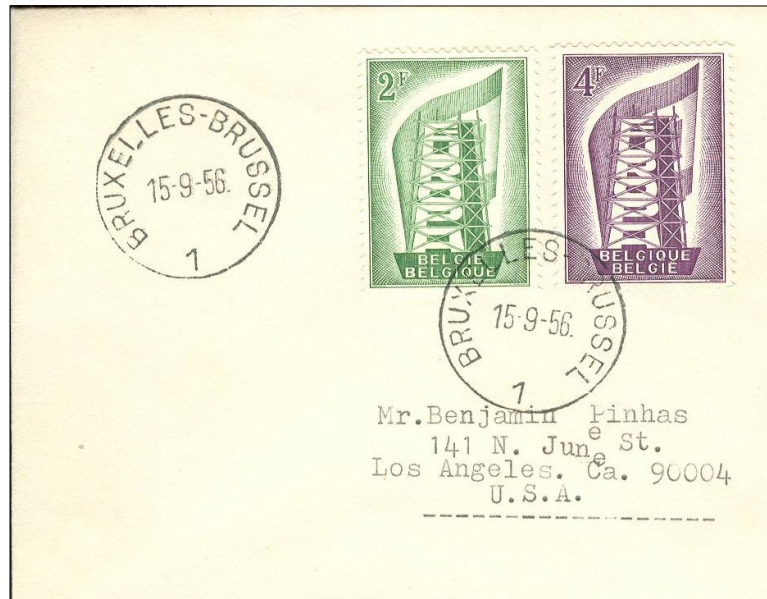


Figure 48. First day cover franked with both values of Belgium's Europa set, bearing the Bruxelles - Brussel cancel. ⁴

Figure 49 is the T-17 cancel - Bruxelles - Brussel Salon Philat.(elic) Salon cancel on a cacheted first day cover.



Figure 49. Cacheted first day cover franked with both values of Belgium's Europa set, bearing the D'Urso T-17 cancel. ⁴

The 1956 EUROPA Stamps — a Monograph by Steve Luster (cont'd)

The D'Urso Catalogue lists number 1/2E, as a miniature sheet on un-gummed carton paper, with the complete set of Belgium's 1956 Europa stamps in their original colors. D'Urso goes on to write that this sheet was issued with the authorization of the Belgian Postal Administration but it has no postal validity. The sheet was sold to the public for 200 Belgian franks.

The proceeds from the sale of the card were used to raise money for the restoration of Beaulieu Castle, the ancestral home of the Thurn & Taxis family. A family member named Franz von Taxis, is credited with establishing the first European postal system.



Figure 60. Sheet containing both values of Belgium's 1956 Europa set, in their issued colors. This sheet had a printing of 7,500.⁴

At figure 61 is a different type of cover. It is franked with 10 francs worth of 1956 Belgian Europa stamps. However, the cover is franked with an additional 4 francs in postage. It's a shame that the additional franking was not done with a 4F Europa stamp. Ahhh! Such is stamp collecting.



Figure 61. Registered, addressed cover with 1956 Belgian Europa stamps and other franking.¹²

Editors Page

Treasurer's Report 1/1/2011-12/31/2011

Opening Balance **\$3,108.65**

Income

Auctions \$539.89

Donations \$1,466.50

2011 \$907.50

2012 \$559.00

Dues \$2,302.40

2011 \$1,150.90

2012 \$1,061.50

2013+ \$90.00

Interest Income \$3.70

Literature & Collectibles \$304.00

ESU souvenirs \$32.00

Monographs \$167.00

Handbook CD \$35.00

Handbook \$70.00

Total Income \$4,616.49

Expenses

Bank Charges (PayPal) \$9.83

Advertising (APS/NTSS)* \$100.00

Printing Costs - EN \$2,560.70

Postage - EN \$1,348.51

Postage - Other \$50.00

Website \$161.76

Transfer to new Account** \$100.00

Total Expenses \$4,330.80

Income less Expenses \$285.69

Closing Balance \$3,394.34

* ads in the StampShow and NTSS programs. These were paid for by a corresponding donation.

** money to open a new account for the new Treasurer. This will be offset in next year's reconciliation.

We finished this year in the black, but this was due to an unusually large number of prescient members who prepaid their dues, thus beating the increase. If this is adjusted for, the trend of previous years persists. Add to this the additional cost of color and the dues increase was absolutely needed. As always, a very big thank you to our generous donors (see next page), and to Don Smith for his outstanding auctions. ■

Executive Secretary Report

Membership as of 12/31/2010: **151**

Less non-renewals/resignations **-15**

Less deaths **-2**

Plus new members **10**

Plus re-instatements **7**

Membership as of 12/31/2011: **151**

For the first time in a while we did not drop in membership. but the increase in dues for 2012 could have a negative impact. Only time will tell, but we have gotten many notes of encouragement from our stalwart supporters, and so we are much encouraged that the Unit will continue to thrive and improve. ■

Who, Me? I Never Make Mistakes!

Sharp-eyed readers of the last issue may have noticed that the table of contents had a few errors. These were caused by some last minute re-arrangement so that we could print some pages in b&w.

I caught these before the issue was posted to the web, but not before the issue went to the printer.

My apologies. ■

Report from APS StampShow, Atlanta GA, 27 January 2012

Pictured (left to right): Tonny VanLoij, Alex Cwiekalo, Steve Chun, Dana Roper. Ours was the first meeting of Day 1. We decided not to do that again, as it was a challenge for folks arriving on the first day. Steve Chun missed the meeting, but joined us for a group photo on the promenade. (He was punished by being in the shadow for the picture.) It was a great show. Your officers spent the time reviewing our actions and member requests for the future of the Club. Minutes are posted on our website in the "Meetings" section of our Members page. Our next meetings will be at the NAPEX and NTSS shows this June. Please stop in; we have a lot of fun talking shop and sharing Europa material.

Editors Page (cont'd)

WEBSITE UPDATES:

Tonny VanLoij recently emailed: "It's been awhile since I've visited [the Member web pages]. I never realized the wealth of information out there, including the possibility to print pages for one's collections. Thanks go to everyone who provides all the checklists and other resources."

Going by our member comments, it seems that our website continues to be a well-kept secret, especially the Members Only pages. Starting with this issue, I'll keep members advised of activities on the site, including new and updated postings. January and February saw the following activity in the Members Area:

- EN#408 posted (in 100% color)
- Scott# updates posted (this is usually on the web 2-3 weeks earlier than in the printed EN)
- Updates to the Europa handbook posted for download (in color):
 - * EFTA issues (cat #s added)
 - * Nordic issues (the update that Don Smith completed some time ago. It will be included in a future EN as an insert).
- Checklist for Joy of Europe issues updated
- Minutes of our recent Unit meetings posted (including status of officers' "Action Items")
- Q&A section updated

Have a question, suggestion? Do you have a checklist (or a request for one)? Drop us a note and we'll get on it.

ALERT

One of our members emailed that he was having trouble logging on to our website. The problem was traced to his user id, which was a mixture of upper and lower case characters.

Please note that the Members website logon, both user id and password, is case sensitive. If you have a mixture of upper and lower case (e.g., Esu) you need to be sure that you make the entry correctly. If you are still having trouble, then check to see that your CapsLock key is not depressed. ■

2011 DONORS

Again, our thanks to all who have donated monetarily to the Unit. Many people gave "a little extra" with their dues remittal; our sincere apologies if we missed someone.

\$50 and up

George Pinyuh	Albert S. C. Sun
Dana Roper	Reid Taube

\$20 to \$50

Carol Barrus	Gary A.
Diane Brunn	Lightbody
Alex Cwiekalo	James A. Nissen
Dean M. Funk	Tonny VanLoij
Richard G.	Jerome
Huether	Zachman

\$10 to \$20

Elizabeth	Leo Malz
Applegate	Patricia Perrella
Mary Bacco	James Prickett
Joseph Bowler	Sue Rosenberg
Fernando	Kurt Schekel
Giustini	Jim Sundberg
Gary L. Jones	Alain Thibert
Kenneth Koch	

up to \$10

Roy Baardsen	Myron Kavalgian
Stephen Chun	Miroslav Kotek
Bruno Codispoti	Chester Kotlarz
Alan B. Cohen	Gerald Laxer
Kenneth	Joel Magyar
Costilow	Norman Merritt
Delvito Crociani	Joe Regula
Cuneyt Cuneydi	Caroline
Mary M. Israel	Scannell
Michel	Mati Tiivel
Journeaux	John Verhaaren

EUROPA NEWS

BULLETIN OF THE

EUROPA STUDY UNIT,

AN ASSOCIATION OF PHILATELISTS
DEVOTED TO THE STUDY OF PHILATELIC
MATERIALS COVERING THE IDEA OF A
UNITED EUROPE... UNITED IN A POLITICAL,
ECONOMIC, AND SOCIAL SENSE.

www.europastudyunit.org

EDITOR: Mr. Dana Roper, 7266 Prices Cove Place, Gainesville, VA 20155;
email: droper555@comcast.net.

EDITORS EMERITUS: Col. Stephen Luster (d) & predecessors

WEBMASTERS: Mr. Chuck Hall, Mr. Dana Roper, Mr. Jasson Cwiekalo

OFFICERS AND DIRECTORS:
PRESIDENT: Ms. Caroline Scannell
EXECUTIVE SECRETARY: Mr. Tonny VanLoij

TREASURER: Mr. Tonny VanLoij

VICE PRESIDENT: Mr. Tonny VanLoij,

SECOND VICE PRESIDENT: Mr. Dana Roper

DIRECTORS: The Officers, and Mr. Dan Shilcrat & Mr. Alex Cwiekalo

AUCTION MANAGER: Mr. Donald W. Smith, P.O. Box 576, Johnstown, PA 15907.

ANNUAL DUES: (Including one year of the *EUROPA NEWS*): Electronic Membership \$10/yr; Standard membership (hardcopy of EN mailed): \$20/yr; \$25/yr outside US/Canada

Dues are payable as of January 1st each year*. Payments must be made in U.S. Dollars; cash, or a bank draft, or a money order (made payable to the Europa Study Unit). We also have a PayPal account ([europastudyunit](mailto:europastudyunit@comcast.net), email europastudyunit@comcast.net) to which any payments can be transferred. Any of these methods is acceptable; however, when using PayPal please add 7% to cover PayPal costs.

SERVICES TO MEMBERS: Periodic bulletin (*EUROPA NEWS*) to all members; website with special "Members Only" section; periodic auctions (~3/yr) of EUROPA-related material, EUROPA Handbook, monographs and specialty items available only to ESU members.

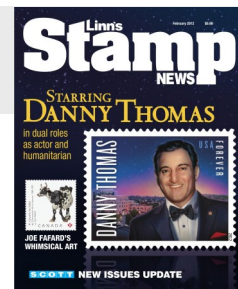
* Dues must be received by 31 January to ensure continued membership, including uninterrupted receipt of the EN.



NEW ISSUES WITH SCOTT CATALOG NUMBERS - Don Smith

* = position in proposed new HB outline (ref. ESU#404-12)

From Linn's **January** & **February** Special Editions



<u>COUNTRY</u>	<u>SCOTT #</u>	<u>DATE OF ISSUE</u>	<u>DESCRIPTION</u>	<u>*</u>
Albania	2907-8	30-Jul-11	Europa 2011 (2908 a souvenir sheet)	1
Armenia	875	1-Jun-11	Capitals Belarus & Armenia, se-tenant pair, joint issue with Belarus 771 <i>see item EN#405-2</i>	3b
Armenia	876	1-Jun-11	Regional Commonwealth Communications, joint issue with Belarus, Kazakhstan, Kyrgyzstan, Russia <i>see item EN#407-4</i>	3b
Belgium	2528	19-Sep-11	Europa 2011 (souvenir sheet of 2)	1
Bosnia	672	9-Sep-11	Europa 2011 (souvenir sheet of 2)	1
Bulgaria	4583	31-Oct-11	Int's Black Sea Day, (souvenir sheet) <i>see article this issue</i>	3b
Croatia	810	13-Sep-11	Rudjer Boskovic, joint issue with Vatican City	3b
Czech Republic	3501	27-May-11	Johann Gerstner, joint issue with Slovenia	3b
Czech Republic	3507	31-Aug-11	Men's European Volleyball Championships	3c
Czech Republic	3509	3-Sep-11	European Conservation (souvenir sheet of 4) <i>see item EN#407-2</i>	3a
Estonia	687	1-Nov-11	Euro 10th Anniversary	2a
Faroe Islands	566	28-Sep-11	SEPAC	1c
France	1069	12-Sep-11	Council of Europe, 50th Anniv. Social Charter <i>see item EN#406-16</i>	2a
Georgia	473-4	15-Oct-10	Europa 2010	1
Grenada	3812-3	22-Jul-11	CERN Large Hadron Collider <i>see article this issue</i>	2a
Guernsey	1136-7	28-Sep-11	SEPAC (Sepac emblem on 1138)	1c
Hungary	4207	6-May-11	Europa 2011 (souvenir sheet of 4)	1
Isle of Man	1455-60	28-Sep-11	SEPAC, 1458 Europa 2011	1c,1
Latvia	779-80	8-Apr-11	Europa 2011	1
Monaco	2649	28-Sep-11	SEPAC	1c
Poland	4012	30-Jun-11	President of the Council of Europe	2a
Romania	5261-2	27-Apr-11	Europa 2011	1
Russia	7267	5-May-11	Europa 2011	1
Russia	7272	26-May-11	Architecture, joint issue with Montenegro	3b
Russia	7273-4	1-Jun-11	Poets, joint issue with Armenia <i>see article EN#405-8</i>	3b

The EU has designated 2012



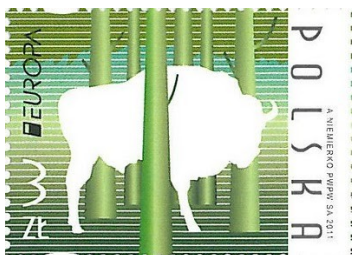
**European Year for Active Ageing
and Solidarity between Generations**



We'll watch for possible stamp issues!

European Bison and Poland's 2011 Europa Stamp - Glenn Roehrig

When I first saw Poland's 2011 Europa stamp on the theme "Forests," I thought it was strange to see the silhouette of a bison so prominently displayed and the forest merely suggested by six stylized tree trunks.



Belarus had issued its Europa stamps, one of which pictured a bison, prior to Poland, but its bison is pictured less prominently so I thought nothing of it:



Anyway, not only did the image not seem to fit the theme, but it didn't seem to fit my image of Poland. I didn't think about it again until I traveled in Poland a month later. There the bison, or more specifically the European bison, was everywhere, from the label on Żubr beer to BANK PEKAO SA's ATM signs. Upon my return home, I decided a little research was in order.



The first thing I learned is that Poland's 2011 Europa stamp is not the first of that country to feature the bison. It first appeared in 1954 on one of four stamps depicting native animals:



The second appearance of a European bison occurred in 1965 as part of a set of nine wildlife stamps:



A herd of bison identified by their Latin name *bison bonasus* made a third appearance on a strip of five stamps in 1981 (first strip below). The final time the bison appeared prior to their appearance on the 2011 Europa issue was in 1996 when they were identified by both their Latin name and their Polish name Żubr (second strip below).



1981



1996

This explained the label from Poland's second most popular beer brand. The Polish connection was resolved.

A little further research revealed that the European bison is also called the European wood bison because unlike its American counterpart that lives on the plains and grazes (i.e., eats off the ground), the European bison is a forest dwelling animal that browses (eats above ground). The mystery of why a bison is so prominently featured on a forest themed stamp is now also solved. The European bison is the heaviest surviving land animal in Europe and it lives mainly in the Białowieża Forest of Poland and Belarus. It is a vulnerable species. By the way, still another name for the animal is the wisent, but that identification has not yet appeared on a stamp.

(Editor's Note: I checked my WWF collection and found only one instance of the European Bison on a WWF stamp—a set from Lithuania in 1991). ■



More New Issues

DENMARK FAROE ISLANDS GREENLAND

Issue date 4 January 2012
HM Queen Margrethe II, 1972—
40th Jubilee of the Queen
Joint Issue



Margrethe II (born 16 April 1940) is the reigning Queen of the Kingdom of Denmark. She is the eldest daughter of King Frederick IX and Queen Ingrid of Denmark. In 1967, she married Henri de Laborde de Monpezat, with whom she has two sons: Crown Prince Frederik (born 1968) and Prince Joachim (born 1969). When her father Frederick IX died in 1972, Margrethe succeeded him as Queen of Denmark and became the first female monarch of Denmark since Margaret I, ruler of the Scandinavian countries in 1375-1412 during the [Kalmar Union](#).

ROMANIA MOLDOVA

Issue date 11 October 2011
Souvenir sheets of 2
20 years of Romania—Moldova Diplomatic Relations
Joint Issue



20 years ago (27 August 1991) the Republic of Moldova proclaimed its independence; two days later the countries established diplomatic relationships.

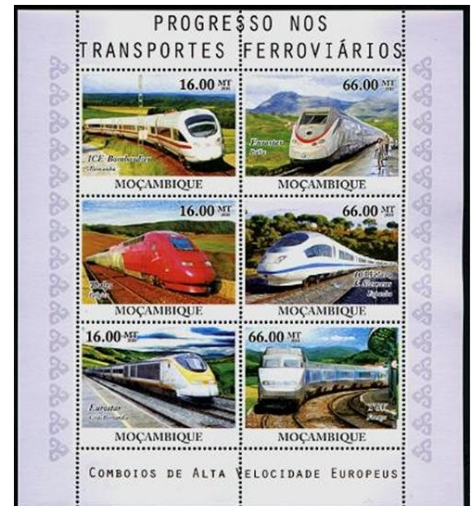
GRENADA

Issue date 22 July 2011
Souvenir sheets publicizing the **Large Hadron Collider (LHC)**.
One souvenir sheet of 4 values, and one sheet of just one value.
Scott catalog numbers 3812-3813.

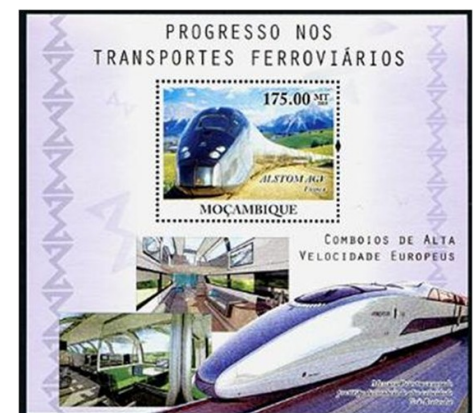


The LHC is what used to be called an "atom smasher" - an enormous underground circular tunnel through which subatomic particles are induced to achieve very high speeds and then collide with one another. The result is the emission of even smaller particles which give insight into how the universe evolved since the first fractional second after the Big Bang. The tunnel in question crosses the Franco-Swiss border, and is an activity of the [European Center for Nuclear Research \(CERN\)](#).

The sheets below were advertised by a prominent new issue dealer as being newly listed by Scott. They purport to be from **MOZAMBIQUE**, and picture various European high-speed trains. Included is the Eurostar, the train which traverses the channel tunnel between England and France. Since this is one of the prominent examples of cooperation between countries it is Europa-related. Indeed, a rather respectable collection can be assembled of just this one sub-topic. (Would anyone like to compile a checklist of stamps showing the **Eurostar** ?)



A note of caution is in order. A huge number of these issues are from countries having nothing to do with Europa, such as the stamps shown here, and whose pedigree may be questionable. Caveat emptor. ■



Results of our Member Poll

Our members voted, and the results closely tracked the tastes of the two PostEurop sponsored polls reported in EN# 406-4.

First place: **Republic of Cyprus**



This was the stamp voted most popular by the first PostEurop Philatelic Jury.

Second place: **Turkey**



This was the stamp voted most popular by the PostEurop online poll respondents. This was the first time in many years that Hungary was knocked out of the first-place spot they have held for the past four years.

Third place: **Great Britain**



Great Britain's colorful entry also marked the 50th anniversary of the World Wildlife Fund. This was the only item passed over by PostEurop. That said, voting among these three was tight, with Finland coming in a close fourth. Thanks to all who voted!

The SEPAC countries are hosting their own contest for most beautiful SEPAC stamp of 2011. Winners get year collections from the various SEPAC countries. [See http://www.sepacstamps.eu/](http://www.sepacstamps.eu/) for details.

Join us at
NAPEX, McLean VA 1-3 June
National Topical Stamp Show (NTSS) Lancaster PA 22-24 June
 Details in next issue, and on the website as they are available



EUROPA NEWS

Bulletin of the Europa Study Unit

Donald W. Smith
PO Box 576
Johnstown, PA 15907

Postmaster:
 Return postage
 guaranteed if
 not delivered.

X next to
 your ad-
 dress means this
 is your last issue
 unless we receive
 your renewal now!